



SINCE 1974

Lighting Section

Ex-d Wellglass/Pendent Fixture (Non - Integral)

Ex II 2 GD , EEx d IIC T4 to T6 ,IP66

Upto 125W HPMV, 70W MH
200W GLS, 2X26W CFL
Product Code LW 61200



Ex-d Wellglass/Pendent Fixture (Integral)

Ex II 2 GD , EEx d IIC T4 to T6 , IP66

Upto 125W HPMV, 70W MH,
200W GLS, 2X26W CFL
Product Code LW 61125



Ex-d Flood Light Fcg.

Awaiting launch



Ex-i Safety Torch

Ex II 2 GD , EEx ib T4 , IP65

Product Code - Stabex HEN (2Cell)
Stabex H3EN (3Cell)



Ex-d Fluorescent Fixture

Ex II 2 GD EExd IIC T4 to T6, IP66

Upto 18/20/36/40/58/65 WATT
(single & Twin)
Product Code - LT 61 series

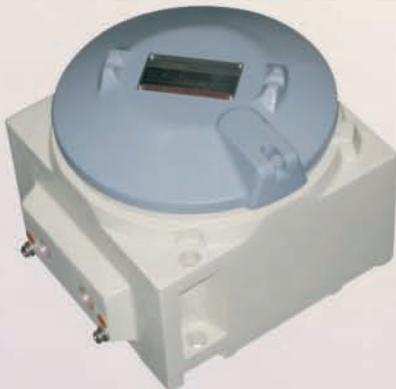


Junction Box - (MOC - AL, SS & CI)

Ex II 2 GD EExd IIC T6, IP66

From 100mm dia to 340mm dia

Product Code - IJ61100 - 100mm dia, IJ61125 - 125mm dia, IJ61160 - 160mm dia,
IJ61204 - 200mm dia, IJ61265- 260mm dia, IJ61321 - 320mm dia, IJ61340 - 340mm dia





SINCE 1974

Ex-e Junction Box - (MOC - GRP)

Ex II 2 GD EEx e T6, IP66

From 100mm dia to 340mm dia

Product Code - Size PGRC121209-120X122X065mm, PGRC122209-120X220X065mm, PGRC161609-160X160X070mm, PGRC122609-160X260X070mm, PGRC252512-250X255X090mm, PGRC254012-250X400X090mm, PGRC274218-270X420X128mm, PGRC363609-360X360X070mm, PGRC374221-370X420X158mm, PGRC404012-405X400X095mm, PGRC426021-420X600X220mm



Ex-d Plug Socket

Ex II 2 GD EExd IIC T6, IP65

Upto 32A, 550V, 5pin (3P+N+E)
Product Code - RP61325



Ex-d Local Control Station

Ex II 2 GD , EEx d IIC T6 , IP65/66

Only Stop Push Button
Product Code - PB 61201



Start Stop Push Button
Product Code - PB 61202



EX-d Control Gear Box
Product Code - LC 61- Series



With - PBS, Ind. Lamp & Ammeter
Product Code - LC 61 - Series



Rotary Switch
Product Code - LC61107



Limit Switch
Product Code - LC61110



Fire Alarm Station
Product Code - LC61209





SINCE 1974



LC-61200
Ex-s IIC
Limit Switch



LC 31400-30701
Ex-d HA/MB
Switch Socket
combined with built in transformer
16A, 24V, Spin tating



DB/31340
Ex-d IIA/IIB
Lighting Distribution Board



30401
Ex-d IIC
Junction Box



Smart-P
Polyester enclosures
IP 65



LC51000
Ex-d IIA/IIB & IIC
Control Station



Stilbo
Ex-e Stainless Steel Enclosures
IP 65



TW91201
FLP & Intrinsically Safe Telephone

Flameproof Custom Built Panels



Ex-d & Ex-e
Cable Glands and Conduit Accessories

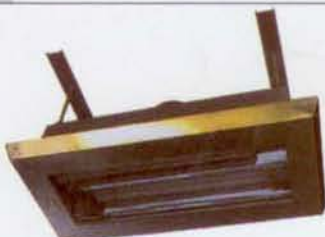
Flameproof Cleanroom Fittings



FLP Switch Socket
Combined with Plug top.



FLP Start Stop
Push Button Station



FLP 2 x 36w
Tube Light Fixture (Zone-1)
(Bottom Open able)



FLP 2 x 23w/26w
Bulk Head Fixture
(Bottom Open able)



2x36w
Tube Light Fixture (Zone-2)
(Bottom Open able)

Our Products



EL-11 PL
Ex-d IIC
Emergency light 11 Watt
with Ni Cd Rechargeable Battery



NLLK - 96 Series
Ex - N / Ex - e (Zone2)
Fluorescent Tube Light
in Non-Metallic Enclosure



LF-61400/
LF-31400
Ex-d MB & IIC
Flood Light
suitable for upto
400 W HPMV lamp



LW-31250
Ex-d MB
Wellglass/ Pendant Light Fixture
Integral suitable for upto 250 W
HPMV LAMP



LT-61240/LT31240
Ex-d MB & IIC
Fluorescent Tube Light



LW-51125
Ex-d IIC
Wellglass / Pendant Light Fixture
integral suitable for upto 125W
HPMV LAMP / 70W MH / 2x26W CFL



LW-21202
Ex-e (Zone 2)
Wellglass / Pendant Light Fixture
integral suitable for upto 125W
HPMV LAMP



LW-51200
Ex-IIA/IIB&IIC
Wellglass / Pendant Light Fixture
suitable of upto 200W / 125W HPMV /
160W MLL LAMP / 70W MH/150W MH



LH-61060
Ex-d IIA/IIB & IIC
Portable Hand Lamp
suitable for upto 60W GLS lamp



Stabex H3EN (3 cell)
Stabex HEN (2 cell)
Safety Torch 2 or 3 cells



RV/103-1/LV61100
Ex-d IIA/IIB & IIC
Reaction Vessel lamp
fitting upto 100W GLS lamp



LC-31400
Ex-d IIA/IIB & IIC
Control Gear Box
suitable for upto 400W HPMV lamp



LB-61201 /LB31201
Ex-d IIA/IIB& IIC
Bulkhead Light Fixture
suitable for upto 200W GLS /160W MIL/
125W HPMV LAMP/ 150W MH/2x26W CFL



40031
Ex-e (Zone 2)
Wellglass / Pendant Light Fixture
suitable for upto 200W GLS /
125W HPMV /160W MIL LAMP



Ex-d IIC
Multiway -junction Box



IJ-61100/IJ-31100
Ex-d IIA/IIB & IIC
Lighting -junction Box



JB/1004-4
Ex-e
Multi-Way Junction Box



LC-21401 Ex-e (Zone 2)
Control Gear Box
Suitable for upto 400W HPMV LAMP



PB-31202 /PB-61202
Ex-d IIA/IIB & IIC
START-STOP Control Station



PB-31254
Ex-d IIA/IIB & IIC
Switch Socket
combined with plug top Rated
upto 25A , 500V AC.